

START BY:

Identifying each window with the rough opening it is to be installed into.
Next, unpack the unit and measure to ensure proper size. Measure its rough opening and ensure that rough opening is 1/2" larger in width and 1/2" larger in height than the frame size of the window unit to be installed into that rough opening.

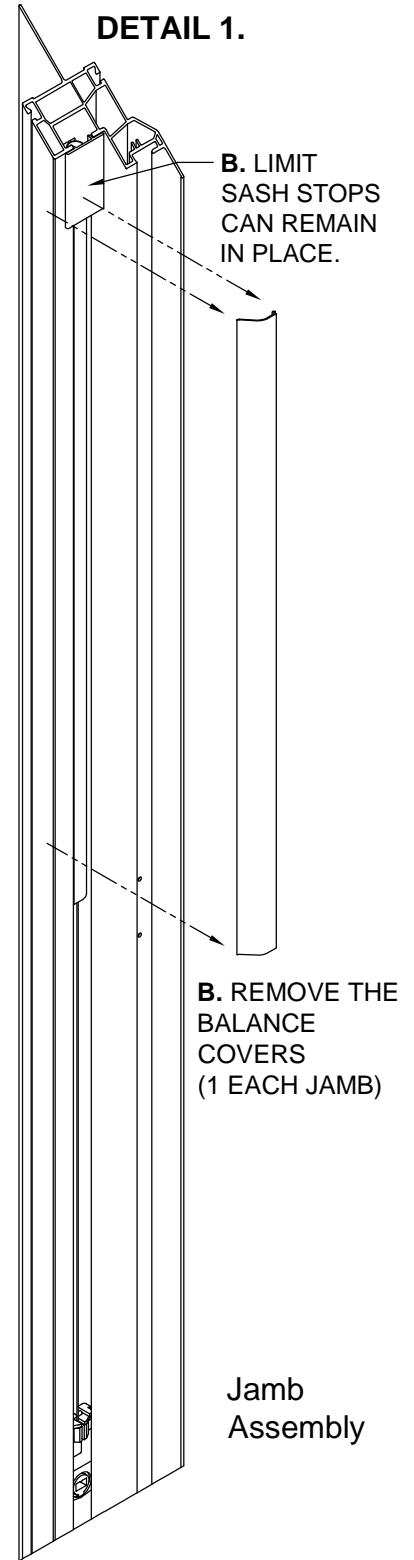
PRE-DRILL WINDOW BEFORE INSTALLATION:

Steps before window is installed:

- A. Raise the lower sash 6" and tilt inward.
- B. Remove balance covers. Limit sash stops can remain installed, **DETAIL 1**.
- C. Return sash to closed position.
- D. **JAMBS (See Details on Page 1 & 2):** Measure down about 6" from head. Shift spiral balance to the interior of balance pocket. At the top of the jamb, measure in 3/4" from interior edge of frame. Drill a 1/8" anchor hole through both walls on the frame. Drill 3/8" access hole to allow screw head through. Do not scuff exposed surfaces of side jambs.
- E. Measure 2" ~ 4" above meeting rail. Follow same hole drilling process as in step D. Drill additional holes to maintain 16" on center to meeting rail hole previously drilled. Both jambs.
- F. Open Sash, measure 2" ~ 4" above sill (see detail below). Measure in 3/4" in from the edge of the inside of the frame. Drill a 1/8" anchor hole through both walls on the jamb. Drill 3/8" access hole to allow screw head through. Do not scuff exposed surfaces of side jambs.
- G. Drill additional holes as required to maintain a hole spacing of no greater than 16" on center.
- H. At the sill, measure 6" from each corner, 16" on center thereafter. Measure in 13/16" from the edge of the sill. Drill a 1/8" anchor hole through walls on the sill filler and the sill. Drill 3/8" access hole to allow screw head through.

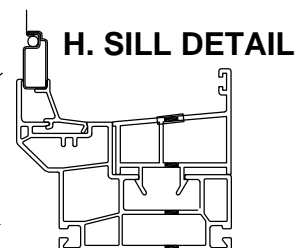
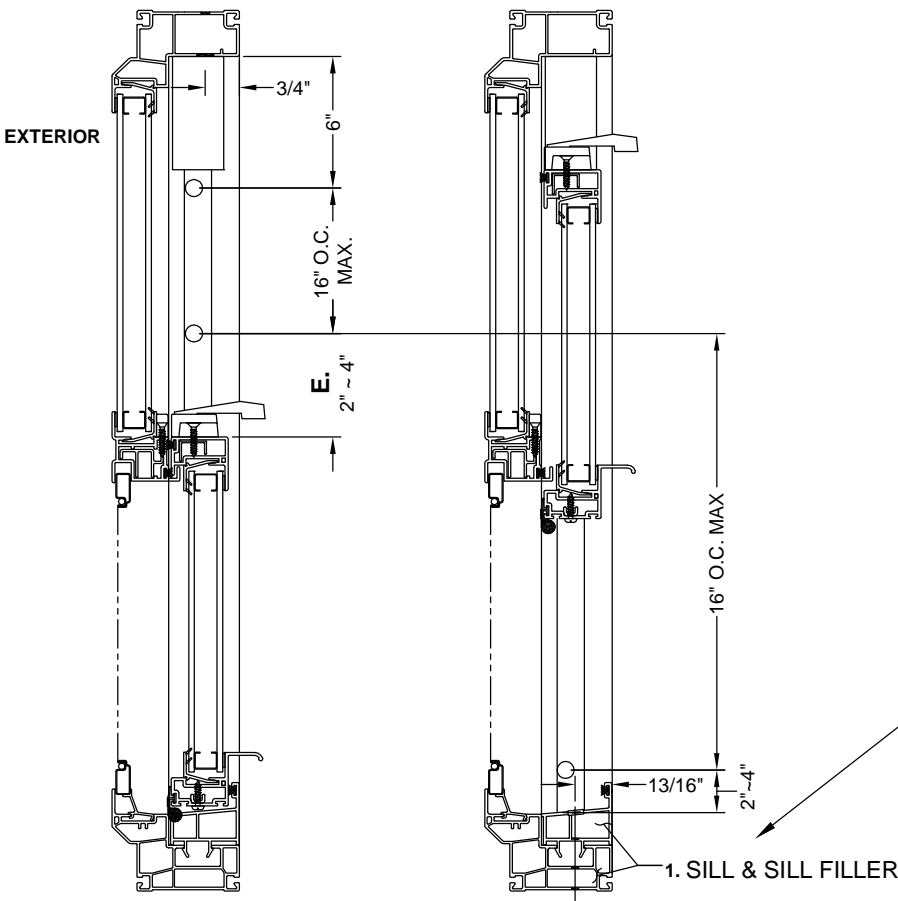
ROUGH OPENING PREPARATION:

- I. Check rough opening for proper size, plumb, level and square.
- J. Make all necessary adjustments to ensure rough opening is plumb, level & square.
- K. Sill must be flat, level and capable of supporting the weight of the unit.
- L. Opening must allow a maximum of 1/4" shim space at head, sill and jambs.
- M. Buck, framing, fasteners, sealant and all wall system materials are provided by others.
- N. Flash opening.



D. & E. PRE-DRILL

F. PRE-DRILL



INSTALL UNIT:

1. Maintain a 1/4" maximum shim space at head, sill and each jamb.
2. A shim is required behind each anchor screw location.
3. - Install #8 x 2" PPH galvanized screws into each pre-drilled installation holes, DO NOT OVER TIGHTEN, through the frame and into the framing material, at head, sill and side jambs.
 - Install cap over hole
 - Silicone seal over cap
4. A 1" minimum fastener embedment into framing material is required.
5. Anchor each upper jamb once window is plumb, level, square. Reference Step 3 & 4.
6. Raise sash to a full open position.
7. Shim and anchor the lower jambs. Reference Step 3 & 4.
8. Lower sash to within 6" of full closed. Tilt sash inward and replace balance covers.
9. Return sash to closed position. Open and close sash to ensure that access hole burrs do not affect sash travel. De-burr as required to make sash open and close smoothly.
10. Anchor the head and the sill. Reference Step 3 & 4.
11. Apply a continuous bead of sealant between the unit and the rough opening at the head, sill and side jambs to secure unit to framing material. Use sealant the is compatible with the vinyl window and the framing material.
12. Install backer rod and sealant.

